

MARCH
2012

ABINGTON TRANSPORTATION STUDY

Prepared for Brockton Area Transit Authority

Old Colony Planning Council
70 School Street
Brockton, MA 02301



Abington Transportation Study

For

Brockton Area Transit Authority

March 2012



Prepared by
Old Colony Planning Council

70 School Street
Brockton, MA 02301

This report was prepared under contract with the Brockton Area Transit Authority (bat).

The contents of this report reflect the views of the Old Colony Planning Council, which is responsible for the facts and the accuracy of the data presented herein. The contents do not necessarily reflect the official views or policy of the Brockton Area Transit Authority.

Acknowledgements

The ***Abington Transportation Study*** was prepared for the Brockton Area Transit Authority by the Old Colony Planning Council staff under the supervision of Charles Kilmer, Transportation Program Manager, and the direction of Pasquale Ciaramella, Executive Director.

Table of Contents

1.0 Introduction	1
2.0 Existing Conditions	1
3.0 Existing Transportation Services	4
3.1 Abington Council On Aging	5
3.2 Area Agency On Aging Volunteer Transportation Program	7
3.3 Brockton Area Transit	8
3.4 Dial-A-BAT	9
3.5 MBTA	10
4.0 Transportation Survey	11
5.0 Human Services Coordination Plan	14
6.0 Potential Services Plans (Cost & Routes)	15
7.0 Conclusion and Recommendations	15
Appendix A – Abington Transportation Survey	

1.0 INTRODUCTION

Not unlike other areas of Massachusetts and the nation, there is an increased demand for public transportation. This trend is likely to continue as the Baby Boomers start to retire and seek a more personal transportation experience for their needs. The struggle is providing this service at a reasonable cost to the community. Door-to-door service is expensive, which is why other transit solutions, such as fixed route or flex route services, are solutions that should be explored.

Reaching out to segments of the population currently being underserved by public transportation is a challenge. Many of these groups have various needs and have limited resources to achieve their organization's goals.

Abington is a suburban town adjacent to the City of Brockton and the towns of Holbrook, Weymouth, Rockland, and Whitman. It is a suburb of both Brockton and Boston, and the recently restored commuter rail service to Boston has made the Town a desirable location for people who commute to metropolitan Boston for work. State Numbered Routes 18, 58, 123, and 139 connect Abington to surrounding communities and to the region's limited access highways, Routes 3, 24, and 123, (which are all one-town distant) making the Town reasonably accessible by road as well as by rail.

Changing population characteristics in Abington have significant implications for Town government in trying to serve the diversity of needs. For example, the number of elderly in the general population and demand for a broader range of elderly programs and services emphasized the need for a Senior Center in Town. While population groups are well mixed town-wide, the youngest and oldest age groups are growing the most, as noted above. The growth of these age groups is expected to continue and the Town can expect pressure for more programs to serve these population groups.

2.0 EXISTING CONDITIONS

Abington is a community consisting of 10.14 square miles in area adjacent to Brockton and south of Weymouth. According to the 2010 Census, the town had 15,985 residents, 11.9 % that are over the age of 65. The Town shows some characteristics of dense development, with about 1,600 residents per square mile; for comparison, Abington is about one third as dense as the City of Brockton at 4,329 residents per square mile.

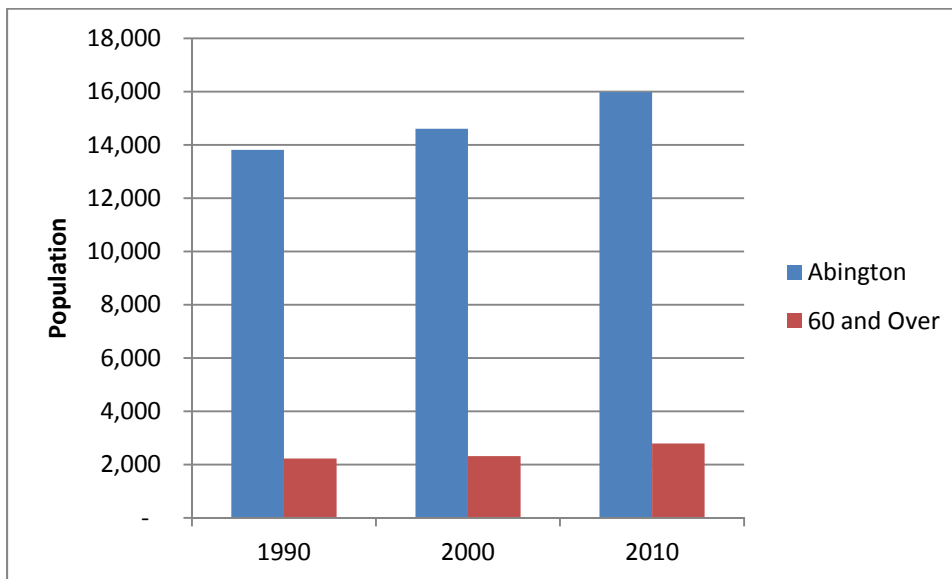
Census data for the town of Abington was compiled and analyzed for the period of 1990 to 2010. From the data review and analyses, the following observations are offered:

- The overall population of Abington is increasing steadily (13,817 in 1990 to 15,985 in 2010)
- The percentage of population of 60 years and older in Abington is increasing slightly (16.2% in 1990, compared to 17.5% in 2010)
- Abington has a lower percentage of population of 60 years and older (17.5% in 2010, when compared to Massachusetts with 19.4% in 2010)
- The median household income for Abington was \$74,589 in 2010, and is above that of Massachusetts (\$64,509 in 2010).

**TABLE 1
POPULATION TREND**

Population	1990	% 60 and Over	2000	% 60 and Over	2010	% 60 and Over
Abington	13,817		14,605		15,985	
60 and Over	2,233	16.2%	2,319	15.9%	2,795	17.5%
Massachusetts	6,016,425		6,349,097		6,547,629	
60 and Over	1,080,881	18.0%	1,096,567	17.3%	1,273,271	19.4%

**FIGURE 1
ABINGTON POPULATION TREND**

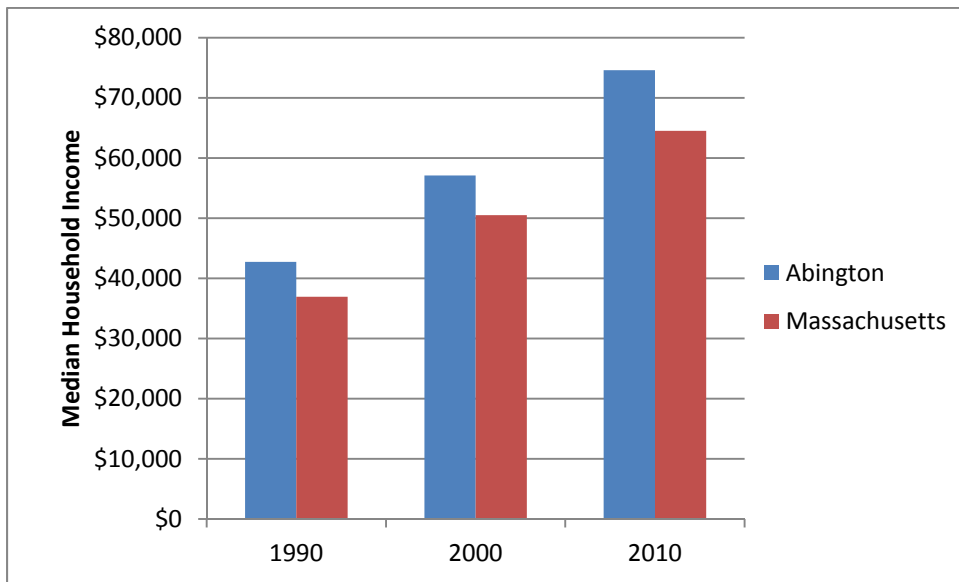


**TABLE 2
MEDIAN HOUSEHOLD INCOME TREND**

Median Household Income	1990	2000	2010
Abington	\$42,730	\$57,100	\$74,589
Massachusetts	\$36,952	\$50,502	\$64,509

Source: US Census

**FIGURE 2
MEDIAN HOUSEHOLD INCOME**

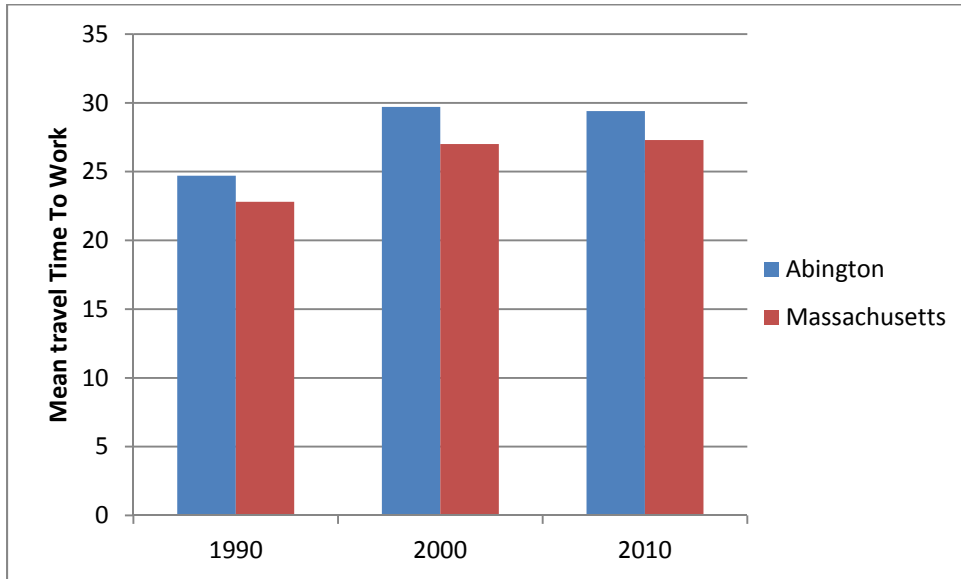


**TABLE 3
MEAN TRAVEL TIME TO WORK TREND**

Mean Travel Time to Work	1990	2000	2010
Abington	24.7	29.7	29.4
Massachusetts	22.8	27	27.3

Source: US Census

FIGURE 3
MEAN TRAVEL TIME TO WORK TREND



Currently, town residents are dependent upon mostly medical services found outside of Abington. Accessing necessities can be a challenge for the transportation dependent population consisting of the elderly, disabled and economically disadvantaged. There are grocery store options in town, and many of the major medical facilities are located in Weymouth, Norwell, or Brockton. Services within the town boundaries are clustered along major routes such Route 18, and Route 123. Numerous pharmacies are located in Abington and satisfy some of the resident's medical needs.

3.0 EXISTING TRANSPORTATION SERVICES

Currently, limited transportation services are available in Abington. The Council on Aging provides limited transportation services five days a week, with a local mall shopping trip scheduled every Friday. Massachusetts Bay Transportation Authority (MBTA) service is available via commuter rail in Abington, and in nearby South Weymouth. Taxi service is available within the community; however, dependency upon it as a sole means of transportation can quickly become expensive for those on a fixed income.

3.1 ABINGTON COUNCIL ON AGING

The Abington Council on Aging currently provides some transportation within the Abington and the surrounding area. The Council on Aging is providing an average of 271 trips a month for seniors for either shopping or medical appointments. This service is highly utilized, and the Council on Aging will often try to work with passengers to rearrange schedules to get the most rides in, with as little dead heading as possible between trips. Much like a subscription service, these rides are typically not one on one, but may collect a few passengers before they start dropping off. The routes are planned within the Council on Aging for maximum efficiency in travel, pick up, and drop off.

The amount of service available with one van may be a hardship for transportation dependent citizens. For example, those on dialysis are dependent upon transportation for life sustaining services. They rely on family, friends, taxi service, or whatever other transportation they can find for these life essential services. Additionally, the elderly and disabled need to be able to access the basic services of medical facilities and food shopping locations, which is not always accomplished with the service that the Council on Aging currently provides with one van. The Council on Aging has done an excellent job providing transportation with the limited resources that they have; however, there are still unmet needs which could require additional service capacities.

The Council on Aging was helpful in providing origin and destination information for this study. Table 5 displays the current destinations of passengers that are utilizing the Council on Aging Transportation Service. This table provides an understanding of the base level of transportation currently available. From the data, the highest percentages of trips are destined for the Senior Center 20%, while 10% are destined for Trucchi's.

As evidenced by the Council on Aging, opportunities for additional trips exist. To accommodate these trips, the Council on Aging seeks expansion of the vehicle fleet from one (1) vehicle to two (2). The provision of a 12 +2, or 14 +2 vehicle through Brocton Area Transit is an option for consideration. In advance of such an acquisition, BAT is willing and able to provide Commercial Vehicle Driver License Training for Council on Aging drivers.

TABLE 4
2011 ABINGTON COA TRANSPORTATION STATISTICS

	Abington COA Van Rides	BAT Rides	Totals
Annual Totals	3,254	2,017	5,271
Monthly Averages	271	168	439

Source: Abington COA (Rides booked through the COA office only)

TABLE 5
ABINGTON COA VAN TRANSPORT - DESTINATIONS

Destination Points for Abington Seniors	Community	Monthly Frequency	Percent
Abington Council on Aging/Senior Center	Abington	20	20%
Trucchi's Supermarket	Abington	10	10%
Hanover Mall	Hanover	4	4%
Eye Health Services	S. Weymouth	4	4%
Whitman Counseling Center	Whitman	4	4%
Compass Medical Center	Abington	3	3%
Stop and Shop Supermarket	Abington	3	3%
Regina's Hair Salon	Abington	3	3%
Abington Savings Bank	Abington	3	3%
Wal-Mart	Abington	3	3%
Braintree Rehabilitation	Abington	3	3%
Brockton Hospital	Brockton	3	3%
Compass Medical Center	E. Bridgewater	3	3%
Tresses Hair Salon	Rockland	3	3%
Rosie's Store	Abington	2	2%
Harbor One Credit Union	Abington	2	2%
Michael's Convenience Store	Abington	2	2%
Physical Therapy	Brockton	2	2%
Walgreens Pharmacy	Rockland	2	2%
Dr. Batista	S. Weymouth	2	2%
Family Hearing Center	S. Weymouth	2	2%
Bills Barber Shop	Abington	1	1%
Dr. Curran	Abington	1	1%
Abington Post Office	Abington	1	1%
Abington Library / Town Hall	Abington	1	1%
Target	Abington	1	1%
Bemis Pharmacy	Abington	1	1%
Dr. Lord	Abington	1	1%
Dr. Cotter	Brockton	1	1%
Dr. King	Brockton	1	1%
West Gate Mall	Brockton	1	1%
The Christmas Tree Shop	Pembroke	1	1%
Stetson Building (Medical Appointments)	S. Weymouth	1	1%
Shields Health Care	S. Weymouth	1	1%
Marshall's	S. Weymouth	1	1%
Beth Israel Deaconess	Whitman	1	1%

Source: Abington COA

3.2 AREA AGENCY ON AGING VOLUNTEER TRANSPORTATION PROGRAM

The Old Colony Planning Council Area Agency on Aging administers a Volunteer Transportation Program (VTP) for senior citizens in a 23-community region in southeastern Massachusetts, of which Abington is a member. The purpose of the VTP is to assist elders who are without any other means of transportation to receive essential services. Volunteer drivers are recruited by councils on aging and assigned to transport elders.

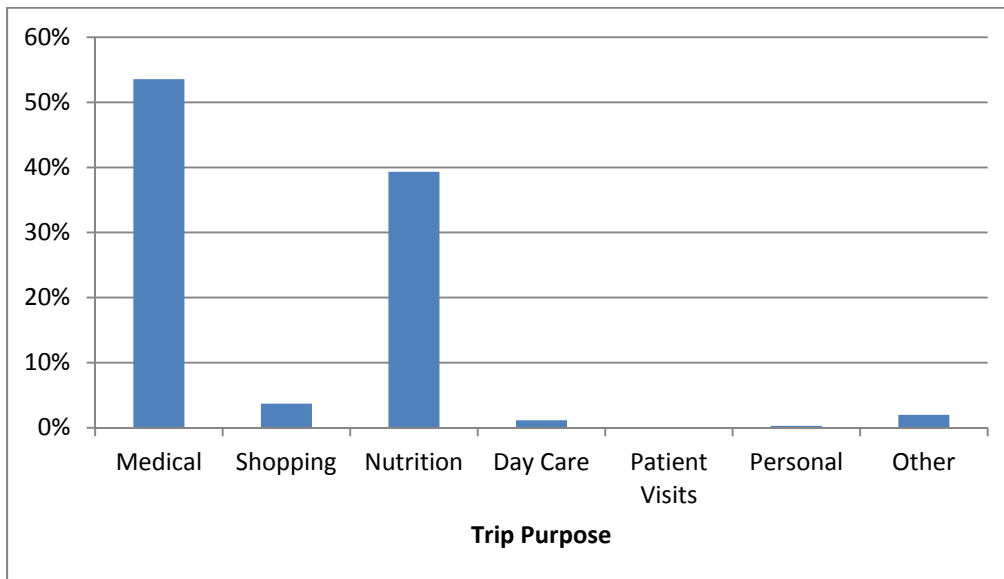
In 2011, the VTP in Abington realized 351 trips. Of those total trips, 54% were for medical purposes and 39% were nutrition related.

TABLE 6
2011 AAA ABINGTON VOLUNTEER TRANSPORTATION PROGRAM SUMMARY

Abington	Miles	Trips	Medical	Shopping	Nutrition	Day Care	Patient Visits	Personal	Other
Totals	6,120	351	188	13	138	4	0	1	7
		100%	54%	4%	39%	1%	0%	0%	2%

Source: OCPC Area Agency on Aging

Figure 4
Area Agency on Aging Volunteer Transportation Program Trip Purpose



The Council on Aging uses Dial-A-BAT first and its van for all other trips, such as shopping trips and trips in Abington and surrounding towns.

Councils on Aging have some of the most direct access to the elderly and disabled population in a community. They promote a variety of programs to enhance the quality of life but the challenge usually comes down to money for the purchase of vehicles, the operations of vehicles, and the repair of vehicles. This, in turn, limits the more localized connection and puts more pressure on other transportation resources to provide the services for those in need.

Finding ways to maintain transportation to these senior populations should be a consideration in any transportation program.

3.3 BROCKTON AREA TRANSIT AUTHORITY

The Brockton Area Transit (BAT) Authority was established on September 30, 1974 in accordance with the provisions of Massachusetts General Laws, Chapter 161B. BAT is the largest provider of fixed route and paratransit in the region, providing fixed route service to six communities and paratransit service to ten communities in the region. In 2006, BAT completed the BAT Centre and Intermodal Transit Facility, offering parking, administrative services, a connection to bus and taxi service and is in close proximity to the commuter rail.

Fixed route bus service is provided in the region to the communities: Abington, Avon, Brockton, Bridgewater, Easton, and Stoughton, and deviated fixed route service in Rockland. Service in Bridgewater is provided by BAT through the Bridgewater State University (BSU) Transportation Services, which focuses on the college community and follows the university's academic calendar. BAT provides transportation to locations such as schools, medical facilities, shopping centers, and industrial parks, in addition to intermodal opportunities including commuter rail stations and the MBTA red line. The 2009 National Transit Database for BAT reports that there were 3,031,591 Annual Unlinked Trips, with 10,921 Average Weekday Unlinked Trips, 4,069 Average Saturday Unlinked Trips, and 1,198 Average Sunday Unlinked Trips.

Abington is part of the Brockton Area Transit System Service Area but has no fixed route bus service other than Route 5. The Route 5 bus travels to the Wal-Mart Department Store near the Brockton line. BAT runs 32 bus trips on Route 5 at 20-minute intervals in the morning hours and less frequent intervals in the afternoon and evening from Monday through Saturday. Sunday service on Route 5 is reduced to 15 trips during the day. Abington residents may access the BAT bus system at this location and could conceivably travel throughout the greater Brockton area on the BAT system or use the BAT Ashmont line bus to travel to Boston and access the MBTA Red Line.

3.4 DIAL-A-BAT

BAT's paratransit service, known as DIAL-A-BAT, began operation in 1977. As one of the first coordinated paratransit systems in the nation, *DIAL-A-BAT* provides transportation to disabled and elderly persons throughout BAT's service area as well as to medical facilities in Boston. Coordinated efforts provide service utilizing private operators, councils on aging, taxi, chair car, and livery providers. BAT, throughout its network of transportation providers, serves a number of human service agencies and private businesses under contract.

Paratransit service is provided to the elderly (over 65 years of age) and all individuals, regardless of age, who fall within the guidelines, set forth by the Americans with Disability Act (ADA) of 1990. Transportation to Human Service Agencies is also provided and may be arranged through contracting with the Authority. *DIAL-A-BAT* transports approximately 17,000 passengers per month in subscription and dial-a-ride service, using mini-buses specially designed for transporting the elderly and disabled. All buses are equipped with two-way radios and wheelchair lifts.

The *DIAL-A-BAT* program does not have any restrictions on trip purpose and may be used for shopping, medical, social/ recreational or service needs. The only restriction in the program is that trips must start or end in Brockton, Abington, Avon, Bridgewater, East Bridgewater, Easton (Roche Bros. Way), West Bridgewater, Whitman or parts of Stoughton. *DIAL-A-BAT* also provides service to nearby medical facilities including Good Samaritan Medical Center, Park Medical Associates, Compass Medical, and West Bridgewater Medical Center. Additionally, *DIAL-A-BAT* provides limited service to Boston's medical facilities for treatment not available in the Brockton area.

Table 7 provides summary of *DIAL-A-BAT* service for the town of Abington. The average total number of trips for 2010 and 2011 was almost 2,000, with a monthly average of 160 over the same period. While there is a Trip Cap of 10 trips per day, the number actual daily trips are eight. An observation may be made that while the daily trips are below the Trip Cap, there could be potential opportunity for additional trips if the cap was raised conservatively to 15. Such a rise would provide additional capacity and complement existing services. Requests for such increases are submitted to Brockton Area Transit from the Chief Elected Official.

**TABLE 7
DIAL-A-BAT TRIP SUMMARY**

	FY 2010	FY 2011
Number of Days	241	251
Number of Trips	1,868	2,017
Average Trips per Month	156	168
Average Trips Per Day	8	8
Daily Trip Cap	10	10
Percentage of Daily Trip Cap	78%	80%

Source: BAT

**TABLE 8
DIAL-A-BAT TRIP DESTINATION SUMMARY
Based on 2 Week Sample**

Destination	Trips	Percentage of Trips
Wal-Mart	23	32.4%
Trucchi's	16	22.5%
Stop and Shop	12	16.9%
Colony House Nursing Home	12	16.9%
Compass Medical	2	2.8%
Dr. Eneyini	2	2.8%
Jay Nails and Spa	2	2.8%
United Church of Christ	2	2.8%

Source: BAT

3.5 MBTA

In 1997, the MBTA restored commuter rail service to Abington on the Plymouth/ Kingston Branch of the Old Colony Line after an absence of almost forty years. Commuter rail service has proven to be a major stimulus to growth and development in Abington and has helped make the town a popular community for persons working in the Boston area. With a station located, just south of Centre Avenue (Route 123), people living in town and working in the Boston have a convenient and easy means of commuting to work. The Abington commuter rail station has 385 vehicle parking spaces and there is additional private parking nearby. A commuter rail station is also available in South Weymouth and some Abington residents find it more

convenient and less expensive to board the train to Boston in Weymouth rather than in Abington.

4.0 TRANSPORTATION SURVEY

A Transportation Survey was developed by Old Colony Planning Council with the assistance of the Abington Council on Aging and the Brockton Area Transit Authority. The survey was included with the October 2011 Council on Aging Newsletter (distribution of approximately 1,800), and posted on the Town of Abington's website. In total, ninety-three (93) surveys were returned, resulting in a return rate of 5%.

The results of the survey indicated an interest for transportation services focusing on medical trips and access to grocery stores. Transportation was also desired for trips to the Senior Center, pharmacy, hairdresser appointments, banking, and general purpose shopping (non-grocery).

The following section provides the individual survey questions and the respective results.

Survey Question #1:

Q: If public transportation were available, would you or members of your family use it?

Question 1 was a Yes or No question to gauge the general interest in people using public transportation. The breakdown of the answers is as follows:

- Yes 93.5%
- No 6.5%

Survey Question #2:

Q: If you had access to public transit, where would you use it to go?

Question 2 was an open-ended response question and as a result, the responses were varied in nature. Some responses were very specific in destination locations; others were more general often stating a town, or a type of place (such as restaurants). The premise of keeping many of the questions open ended was to not direct any of the respondents to respond in a certain manner, but it does make a specific statistical comparison more challenging.

The survey allowed the respondents to identify numerous locations, in the same response, which means the responses will not add up to a 100%. The percentages are given as a ratio between the total number of people that responded to this question, and the amount of people that responded with that particular location.

From the open-ended questions, the two largest responses were 20% of respondents who identified medical related destinations for their visit and 17% of respondents identified the need for transportation to shopping at various locations. The following is a summary of the responses:

▪ Medical	20%
▪ Shopping	17%
▪ Brockton	7%
▪ Weymouth	6%
▪ Quincy	5%
▪ Boston	4%
▪ Braintree	4%
▪ Abington Train Station	3%
▪ Abington	3%
▪ Braintree T Station	2%
▪ Bridgewater	2%
▪ Easton	2%
▪ Hanover	2%
▪ Library	2%
▪ Norwell	2%
▪ Restaurants	2%
▪ Rockland	2%
▪ South Shore Hospital	2%
▪ Stop and Shop	2%
▪ Target	2%
▪ Wal Mart	2%
▪ Brockton Hospital	1%
▪ Compass Medical in East Bridgewater	1%
▪ East Bridgewater	1%
▪ Hanover	1%
▪ Hingham	1%
▪ Holbrook	1%
▪ Hull	1%
▪ Milton	1%
▪ Randolph	1%
▪ Senior Center	1%
▪ Trucchi's	1%
▪ Weymouth Train Station	1%

Survey Question #3:

Q: How many times a month would you use public transportation?

This question was designed to gauge the response and need for public transportation in several aspects of people’s lives. The question was broken down into four types of trips, medical, shopping (including grocery), recreation/social, and “other.” The average amount of trips for Medical was 2.69 trips out of 48 responses. The average for shopping trips was 3.50 for 54 responses, for recreational trips were 3.90 out of 44 responses and other trips had an average of 4.50 out of 30 responses. Being mindful, that the two categories with the highest response rate, medical and shopping, are trips that people need to make to cover the basic essentials, those types of trips should be highest propriety. The following is a summary of responses:

	Response Average
▪ Medical Trips	2.69 Trips
▪ Shopping	3.50 Trips
▪ Recreation/Social	3.90 Trips
▪ Other	4.50 Trips

Survey Question #4:

Q: Would you be willing to pay \$2.50 dollars per trip to use public transportation?

This question was a straightforward Yes or No question.

- Yes 93.5%
- No 6.5%

Survey Question #5:

Q: What are the locations of the medical facilities that you may use public transportation to reach?

This survey question was another open-ended response question to disseminate the locations of medical facilities and the types of trips Abington residents need to make. The two most frequently answered destinations were Brockton (23%) and Weymouth (22%).

- Brockton 23%
- Weymouth 22%
- Boston 11%
- Abington 7%

- East Bridgewater 6%
- Easton 5%
- Braintree 4%
- Bridgewater 4%
- Norwell 4%
- Quincy 4%
- Whitman 3%
- Hanover 1%
- Hingham 1%
- Milton 1%
- Pembroke 1%
- Scituate 1%
- Stoughton 1%

Survey Question #6:

Q: Please share any additional comments on the development of public transportation in Abington?

This was an open-ended question to capture any remaining thoughts or comments regarding public transportation in the Town of Abington. Overall, the response was positive. Respondents are currently in need of, or anticipating the need for public transportation in order to cover the necessities, of grocery shopping, access to drug stores, and medical facilities. All of the comments received are available for review and are located in the appendix of this report.

5.0 HUMAN SERVICES COORDINATION PLAN

The Town of Abington is a member of the Old Colony Metropolitan Planning Organization (MPO), and as such, is included as part of the Old Colony MPO *Coordination Human-Services Transportation Plan*. The plan identified four populations that could utilize additional transportation service options. The populations are elderly, those with disabilities, those with low incomes, and reverse commuters. Some of the strategies developed from the plan address include, but are not limited to: gaps in services include, increase hours of operation; increase service coverage; improved accessibility of existing services; improved communications; and improved intermodal connections.

6.0 POTENTIAL SERVICES PLANS (COST & ROUTES)

Through the survey and conversations with the Council on Aging, there is interest for increased transportation in the Town of Abington. A subscription type service could be the most efficient and cost effective way to address the most immediate and important transportation needs of the transportation dependent citizens of Abington. A subscription service, coupled with the current Council on Aging Transportation program, would increase the mobility of these populations.

Subscription service works through the development of “tours.” The service is often designed with a focus on certain destinations on certain days of the week. The mini-bus or van would pick up passengers in town and then head out towards the end of the tour, dropping people off along the way. There are no schedules with subscription type services. Schedules for the passengers are determined after all the rides are requested. Service is therefore shaped by the demand for each “tour.”

7.0 CONCLUSION AND RECOMMENDATIONS

The Town of Abington, Brockton Area Transit, and Old Colony Planning Council should closely monitor changes in the public’s needs and requirements for transportation, including travel demands and patterns that could lead to an expansion of public transportation service to Abington in the future. Subscription service could make it more convenient for persons living in the community to use public transportation for travel to work, recreation, and shopping trips.

The Council on Aging currently provides a valuable transportation service to the seniors of Abington. This service should be continued in addition to any new service that maybe added to the town.

Currently, with many of the trip generators located outside of town, it would be difficult and costly to implement a successful fixed route service up and running to meet the immediate demand at this time. In the future, the implementation and growth of a subscription service could lead into a successful pilot of fixed route service. A service that could focus on town locations in the beginning, including the many destinations along Routes 18 and 123, including pharmacies, hairdressers, banks, the Town Hall, senior center and some medical services.

In order to accommodate the demand for transportation services, the following recommendations are offered for the short term:

- The Abington Council on Aging should work with Brockton Area Transit to obtain Commercial Driver License Training and Certification for their drivers. Following successful training and certification, the Abington Council on Aging should work with Brockton Area Transit to beta test an older mini-bus with enhanced capacity.
- The Abington Council on Aging should work with Brockton Area Transit to potentially develop a highly coordinated shopping/ and or medical tour.
- The Abington Council on Aging should work with Brockton Area Transit and the Rockland Council on Aging on the potential for developing a highly coordinated shopping and/ or medical tour.
- The Abington Board of Selectmen should request an increase to the *DIAL-A-BAT* Trip Cap to 15 individuals per day.
- The Abington Council on Aging, along with other Councils on Aging, should work with Brockton Area Transit and Old Colony Planning Council to study the potential for increased transportation for medical trips along the Route 18 Corridor spanning from East Bridgewater to Weymouth.

Appendix A – Abington Transportation Survey Results

Abington Transportation Study - Survey Results

1. If public transportation was available, would you or members of your family use it?

Answer Options	Response Percent	Response Count
yes	93.5%	86
no	6.5%	6
<i>answered question</i>		92
<i>skipped question</i>		1

2. If you had access to public transit, where would you use it to go?

Answer Options	Response Count
	86
<i>answered question</i>	86
<i>skipped question</i>	7

Number	Response Text	Response Date
1	To Boston	Feb 9, 2012 7:33 PM
2	Sites in Abington, Rockland, Weymouth, Norwell, Brockton	Dec 28, 2011 2:42 PM
3	Medical appointments Shopping	Dec 28, 2011 2:39 PM
4	Hanover Brockton Other Places	Dec 9, 2011 7:31 PM
5	Markets Malls Medical and Dental Appointments Library Restaurants	Dec 9, 2011 7:30 PM
6	Appointments Visiting Malls, etc.	Dec 9, 2011 7:28 PM
7	Stop and Shop Wal-Mart Target Trucchi's	Dec 9, 2011 7:25 PM
8	doctors	Dec 9, 2011 7:21 PM
9	Doctors	Dec 9, 2011 7:20 PM
10	Doctors	Dec 9, 2011 7:20 PM
11	everywhere	Dec 9, 2011 7:20 PM
12	Medical, Shopping	Dec 9, 2011 7:19 PM
13	Brockton Weymouth Bridgewater	Dec 9, 2011 7:18 PM
14	Hanover East Bridgewater Brockton Weymouth	Dec 9, 2011 7:17 PM
15	Store S. Doctors.	Dec 9, 2011 7:17 PM
16	To doctors in Braintree + Grossman's Drive, South Shore Plaza, Route 18 Stores, restaurants, shopping in Brockton + Easton	Dec 9, 2011 7:17 PM

17	Weymouth Quincy Braintree Holbrook	Dec 9, 2011 7:17 PM
18	train station in Abington or Weymouth so I could get to Boston	Dec 9, 2011 7:15 PM
19	Trips with seniors, outside of our general areas, not necessarily to casinos, we do not gamble.	Dec 9, 2011 7:14 PM
20	Doctor Shopping	Dec 9, 2011 7:14 PM
21	Boston Quincy	Dec 9, 2011 7:12 PM
22	South Shore Mall	Dec 9, 2011 7:10 PM
23	Bridgewater state, Boston, and other surrounding towns	Dec 9, 2011 7:10 PM
24	Rockland T Stop	Dec 9, 2011 7:09 PM
25	Doctors appointments Grocery shopping, etc. Friends, Family	Dec 9, 2011 7:09 PM
26	From train station to Dryer library town hall	Dec 9, 2011 7:08 PM
27	I use the train already to go to and from Boston. I would use a transit route to Brockton.	Dec 9, 2011 7:07 PM
28	Boston - South Shore Plaza	Dec 9, 2011 7:05 PM
29	To Brockton	Dec 9, 2011 7:04 PM
30	Everywhere!!!	Dec 9, 2011 7:03 PM
31	Work Visiting friends and relatives Shopping Doctors appointments	Dec 9, 2011 7:03 PM
32	Medical appointments, social events	Dec 9, 2011 7:02 PM
33	Medical appointments, social events	Dec 9, 2011 7:01 PM
34	to the Abington T station	Dec 9, 2011 7:01 PM
35	Boston	Dec 9, 2011 7:00 PM
36	Doctors, shopping	Dec 9, 2011 7:00 PM
37	NA	Dec 9, 2011 6:56 PM
38	Braintree T station	Dec 9, 2011 6:54 PM
39	Braintree Quincy Boston Easton	Dec 9, 2011 6:54 PM
40	to doctor's offices	Dec 9, 2011 6:53 PM
41	Medical trips, recreational + social trips Shopping trips Wherever I may need the transportation	Dec 9, 2011 6:52 PM
42	Doctor's appointments in Norwell	Dec 9, 2011 6:51 PM
43	Medical trips shopping	Dec 9, 2011 6:50 PM
44	dr's offices, grocery shopping, social activities	Dec 9, 2011 6:50 PM
45	South Shore hospital, Braintree S. S. Plaza, Rockland Plaza, Hanover mall.	Dec 9, 2011 6:48 PM
46	Doctor appointments	Dec 9, 2011 6:47 PM
47	Abington, Quincy, Braintree, Milton, Weymouth, Hingham, South Shore	Dec 9, 2011 6:46 PM
48	N/A	Dec 9, 2011 6:45 PM
49	Medical appointments Food shopping	Dec 9, 2011 6:44 PM

50	Braintree; Quincy; Weymouth; Abington; South Weymouth; Railroad Station	Dec 9, 2011 6:43 PM
51	Drs' appointments, shopping, banks	Dec 9, 2011 6:42 PM
52	Doctors Shopping Pay bills	Dec 9, 2011 6:42 PM
53	Brockton, South Weymouth, Norwell	Dec 9, 2011 6:41 PM
54	Doctors Food Shopping	Dec 9, 2011 6:41 PM
55	Dr's appointments	Dec 9, 2011 6:39 PM
56	Doctor Shopping Visit friends	Dec 9, 2011 6:39 PM
57	Medical visits outside of Abington.	Dec 9, 2011 6:38 PM
58	Doctors - shopping - visiting friends and family	Dec 9, 2011 6:38 PM
59	Holbrook, Braintree, Boston, Randolph, Quincy, Weymouth	Dec 9, 2011 6:37 PM
60	Hanover Mall Westgate Mall Weymouth, Blg H19, etc.	Dec 9, 2011 6:36 PM
61	To Dr. Cotter's office on Quincy St Brockton	Dec 9, 2011 6:34 PM
62	Braintree, Ma.	Dec 9, 2011 6:34 PM
63	Doctors Visits Hospitals	Dec 9, 2011 6:34 PM
64	Dr appointments - Wal Mart	Dec 9, 2011 6:33 PM
65	Medical appointments + shopping	Dec 9, 2011 6:33 PM
66	Shopping - movies - train station	Dec 9, 2011 6:32 PM
67	Boston + Braintree	Dec 9, 2011 6:30 PM
68	compass medical Bridgewater	Dec 9, 2011 6:30 PM
69	Brockton Hospital - South Shore Hospital - Wellspring/ Hull	Dec 9, 2011 6:29 PM
70		Dec 9, 2011 6:28 PM
71	Medical - Brocton Doctors / Hospitals	Dec 9, 2011 6:23 PM
72	shopping - East Side Brockton food - Abington Trucchi's doctor - Weymouth	Dec 9, 2011 6:23 PM
73	To do shopping, Macy's, etc.	Dec 9, 2011 6:19 PM
74	South Shore Hospital - Weymouth - Doctors. Quincy Shopping - South Shore Plaza, Braintree	Dec 9, 2011 6:17 PM
75	Grocery stores, Target, Wal-Mart, medical appointments, commuter rail station, Braintree T station	Dec 9, 2011 6:15 PM
76	Weymouth - Target, Stop + Shop Hanover	Dec 9, 2011 6:12 PM
77	No	Dec 9, 2011 6:10 PM
78	Boston Brockton Quincy Easton Quincy	Dec 9, 2011 6:09 PM
79	The Abington Train Station , Braintree South Shore Plaza, South Shore Hospital, Compass Medical in East Bridgewater	Oct 31, 2011 6:43 PM
80	Would depend on the areas that the route covered.	Oct 30, 2011 11:41 PM
81	Dr appointments, restaurants and shopping plazas/malls.	Oct 30, 2011 2:49 PM

82	south shore plaza Mbta station (daily) Dr. appointments Shopping at the malls, Restaurants, movies	Oct 30, 2011 2:25 PM
83	Hospitals - Doctors - Shopping	Oct 24, 2011 3:21 PM
84	grocery store, shopping mall, Abington Wal-Mart, local restaurants, movies, visit friends, grandkids sporting events	Oct 12, 2011 2:40 PM
85	Target, Stop & Shop, Senior Center, Braintree T station	Oct 5, 2011 12:10 PM
86	grocery and food shopping, library, doctor visits, senior center	Sep 30, 2011 8:11 PM

3. How many times a month would you use public transportation?

Answer Options	Response Percent	Response Count
a. For Medical Trips - (Response Average = 2.69)	82.5%	66
b. For Shopping Trips - (Average = 3.5)	81.3%	65
c. For Recreation/Social Trips - (Average = 3.9)	67.5%	54
d. For Other Trips - (Response Average = 4.5)	52.5%	42
<i>answered question</i>		80
<i>skipped question</i>		13

4. Would you be willing to pay \$2.50 to use public transportation?

Answer Options	Response Percent	Response Count
yes	93.5%	87
no	6.5%	6
<i>answered question</i>		93
<i>skipped question</i>		0

5. Where are the locations of the medical facilities that you may use public transportation to reach?

Answer Options	Response Count
	86
<i>answered question</i>	86
<i>skipped question</i>	7

Number	Response Date	Response Text
1	Brockton North Easton Boston	Feb 9, 2012 7:33 PM
2	Weymouth Brockton	Dec 28, 2011 2:42 PM
3	Oak Street, Brockton Pearl Street, Brockton	Dec 28, 2011 2:39 PM
4	East Bridgewater	Dec 9, 2011 7:31 PM
5	South Weymouth	Dec 9, 2011 7:30 PM
6	Compass - East Bridgewater Westgate Mall - Brockton Stoughton Allergist Doctor	Dec 9, 2011 7:28 PM
7	NA	Dec 9, 2011 7:25 PM
8	Norwell Scituate	Dec 9, 2011 7:23 PM
9	South Weymouth Rockland Brockton	Dec 9, 2011 7:23 PM
10	S. Weymouth	Dec 9, 2011 7:21 PM

11	Weymouth - eye health Easton - Roche Bros. Way Dermatology	Dec 9, 2011 7:20 PM
12	Bridgewater	Dec 9, 2011 7:20 PM
13	Brockton, Norwell, Weymouth	Dec 9, 2011 7:20 PM
14	Bridgewater Weymouth Easton	Dec 9, 2011 7:18 PM
15	E. Bridgewater, Hanover, Brockton	Dec 9, 2011 7:18 PM
16	East Bridgewater Weymouth Easton Abington	Dec 9, 2011 7:17 PM
17	Whitman	Dec 9, 2011 7:17 PM
18	Braintree, Brockton, Boston, Tufts Medical, Brigham and women's hospital in Boston.	Dec 9, 2011 7:17 PM
19	Quincy Weymouth	Dec 9, 2011 7:17 PM
20	Boston - Kenmore Square	Dec 9, 2011 7:15 PM
21	Brockton Hospital, Medical Center East Bridgewater, Dentist Whitman, Hospital Boston, ears/eyes Pembroke	Dec 9, 2011 7:14 PM
22	Quincy Weymouth	Dec 9, 2011 7:14 PM
23	Weymouth - Libby Park	Dec 9, 2011 7:13 PM
24	Boston - work Quincy	Dec 9, 2011 7:12 PM
25	VA in Brockton, MA	Dec 9, 2011 7:10 PM
26	Braintree and Quincy	Dec 9, 2011 7:10 PM
27	VA Brockton	Dec 9, 2011 7:09 PM
28	Brockton: Liberty Street, Quincy Street, N. Main St., Pearl St., Center St., Christy's Drive West Bridgewater Hingham Easton Hanover	Dec 9, 2011 7:09 PM
29	Boston	Dec 9, 2011 7:07 PM
30	Boston	Dec 9, 2011 7:05 PM
31	Brockton and Abington	Dec 9, 2011 7:04 PM
32	So. Shore Hospital	Dec 9, 2011 7:03 PM
33	Brockton Ave., Abington Libby St., Brockton Roche Bros Way, Easton No. Main Street, Brockton Quincy St, Brockton	Dec 9, 2011 7:03 PM
34	Weymouth Brockton	Dec 9, 2011 7:02 PM
35	Brockton	Dec 9, 2011 7:01 PM
36	MGH Boston	Dec 9, 2011 7:00 PM
37	Abington, Brockton, Bridgewater	Dec 9, 2011 7:00 PM
38	NA	Dec 9, 2011 6:56 PM
39	Brigham and Women's Hospital	Dec 9, 2011 6:54 PM
40	Brockton Easton	Dec 9, 2011 6:54 PM
41	From Shore avenue to Harbor medical in Weymouth	Dec 9, 2011 6:53 PM

42	South Weymouth Brockton Hospital, Brockton Signature Medical Group - Brockton, MA	Dec 9, 2011 6:52 PM
43	Norwell and Weymouth	Dec 9, 2011 6:51 PM
44	# 1 Pearl St. Brockton Good Samaritan Hospital Whitman Medical Center	Dec 9, 2011 6:50 PM
45	Brockton	Dec 9, 2011 6:50 PM
46	Harbor Medical (Rt18) south shore hospital, Stetson Bldg. south Weymouth	Dec 9, 2011 6:48 PM
47	Liberty Street - Brockton MA	Dec 9, 2011 6:47 PM
48	Quincy, Braintree, Milton, Weymouth, Hingham (call the T if need a ride to these locations.	Dec 9, 2011 6:46 PM
49	N/A	Dec 9, 2011 6:45 PM
50	Brockton Abington	Dec 9, 2011 6:44 PM
51	Libby Park - South Weymouth South Shore Medical Norwell Harbor One - South Weymouth	Dec 9, 2011 6:43 PM
52	Mostly up route 18	Dec 9, 2011 6:42 PM
53	Brockton Weymouth Boston	Dec 9, 2011 6:42 PM
54	North Easton, Brockton, South Weymouth, Braintree, Boston	Dec 9, 2011 6:41 PM
55	Medical Building - Route 18	Dec 9, 2011 6:41 PM
56	Weymouth	Dec 9, 2011 6:39 PM
57	Whitman Bridgewater Abington	Dec 9, 2011 6:39 PM
58	Weymouth - Norwell	Dec 9, 2011 6:38 PM
59	S. Shore Hospital Stetson Building Harbor Medical - Brockton Hosp. Dentist	Dec 9, 2011 6:38 PM
60	Boston, Bridgewater, Abington, Weymouth, Quincy	Dec 9, 2011 6:37 PM
61	Pearl Street, Brockton	Dec 9, 2011 6:36 PM
62	Dr Cotter's office @ 179 Quincy St Brockton	Dec 9, 2011 6:34 PM
63	Braintree, Ma.	Dec 9, 2011 6:34 PM
64	Abington South Shore Hospital, Weymouth Brockton Hospital Good Samaritan Hospital	Dec 9, 2011 6:34 PM
65	Bridgewater - Brockton - Abington	Dec 9, 2011 6:33 PM
66	Bridgewater, Abington, Brockton	Dec 9, 2011 6:33 PM
67	Weymouth, Abington	Dec 9, 2011 6:32 PM
68	Boston	Dec 9, 2011 6:30 PM
69	Boston occasionally South Weymouth, Brockton, E. Bridgewater	Dec 9, 2011 6:30 PM
70	Brockton Hospital and South Shore Hospital, South Weymouth Braintree Rehab	Dec 9, 2011 6:29 PM
71	South Shore Hospital - S. Weymouth Stetson Med. Building - S. Weymouth Compass - Abington + East Bridgewater	Dec 9, 2011 6:28 PM
72	BU Dermatology - North Pearl St Dr. Paul Cotter - eye doctor - Quincy Ave., Good Samaritan	Dec 9, 2011 6:23 PM

73	Rte. 18 -Weymouth - Harbor Medical	Dec 9, 2011 6:23 PM
74	Pearl St in Brockton Quincy Ave. in Brockton	Dec 9, 2011 6:19 PM
75	Weymouth - Quincy	Dec 9, 2011 6:17 PM
76	South Shore Hospital, Boston Hospitals (Beth Israel), Milton Hospital	Dec 9, 2011 6:15 PM
77	Weymouth	Dec 9, 2011 6:12 PM
78	None	Dec 9, 2011 6:10 PM
79	Boston Easton	Dec 9, 2011 6:09 PM
80	Compass Medical in East Bridgewater	Oct 31, 2011 6:43 PM
81	Compass Medical in E. Bridgewater	Oct 30, 2011 2:49 PM
82	Compass medical, south shore hospital, Brockton Hospital , Medical clinics in towns	Oct 30, 2011 2:25 PM
83	So. Shore Hospital - various on Rte. 18 in Weymouth - Performance Dr in Weymouth - So Shore Medical Center in Norwell - BOSTON = B&W - BI - Boston Medical	Oct 24, 2011 3:21 PM
84	Weymouth	Oct 12, 2011 2:40 PM
85	Boston	Oct 5, 2011 12:10 PM
86	Braintree, Weymouth, Boston	Sep 30, 2011 8:11 PM

6. Please share any additional comments on the development of public transportation in Abington.	
Answer Options	Response Count
	56
<i>answered question</i>	56
<i>skipped question</i>	37

Number	Response Text	Response Date
1	Senior Van Service is good, but not enough; expand hours, open mall rides to others - not just Senior housing residents, add 2nd van that's easier for seniors with mobility issues such as vehicle lower to the ground.	Dec 28, 2011 2:42 PM
2	I think a lot of seniors would use it.	Dec 9, 2011 7:31 PM
3	Probably would not use a great deal at this time. However, during bad driving weather and with advent of old age and loss of car, would use a lot.	Dec 9, 2011 7:30 PM
4	When you are without a motor vehicle, it is difficult to get anywhere.	Dec 9, 2011 7:28 PM
5	I Understand this survey pertains to public transportation in Abington. The bigger need is for volunteer transportation to Boston.	Dec 9, 2011 7:25 PM
6	Without the Van cannot get to doctors	Dec 9, 2011 7:21 PM
7	It would help people to get where they cannot get any other ride.	Dec 9, 2011 7:20 PM
8	I don't have a license	Dec 9, 2011 7:20 PM
9	Definitely badly needed especially for elderly, help!!!!	Dec 9, 2011 7:17 PM
10	Public transportation access is definitely needed in Abington, especially from 139 and 18.	Dec 9, 2011 7:17 PM
11	I would like to be able to get to Boston and back day and evening.	Dec 9, 2011 7:15 PM

12	We would be most appreciative for trans. for those unable to drive, without vehicles, physically unable to drive, or unfamiliar with the area /or region/s.[] P.S. If for any unforeseen reason, we are unable to drive, we would be regular riders, definitely.	Dec 9, 2011 7:14 PM
13	Where do I find the answers to the riddles? Please	Dec 9, 2011 7:13 PM
14	Convenient locations with parking spaces	Dec 9, 2011 7:10 PM
15	The Town of Abington is in great need for public transportation	Dec 9, 2011 7:10 PM
16	To take public transportation from Abington to Brockton, Quincy + all other neighboring towns would be a true blessing + savings on me + my car + for my passengers as well. My passengers just don't know it yet!	Dec 9, 2011 7:09 PM
17	We have walked everywhere and the sidewalks aren't very good, taxi service from train service would be good or at least a phone number to call when you get there.	Dec 9, 2011 7:08 PM
18	I see BAT bus between Brockton and Rockland and may use it someday to go to and from Brockton	Dec 9, 2011 7:07 PM
19	Bus stop signs are not marked	Dec 9, 2011 7:04 PM
20	It would allow residents to visit friends + family in adjoining towns, especially for those of us who do not drive.	Dec 9, 2011 7:03 PM
21	NA	Dec 9, 2011 6:56 PM
22	I am an Abington resident	Dec 9, 2011 6:55 PM
23	Taurner Hospital	Dec 9, 2011 6:54 PM
24	With so much car traffic, public transportation would be so beneficial. Why it was done away with years ago, we could not understand.	Dec 9, 2011 6:54 PM
25	It's a good price for its service	Dec 9, 2011 6:53 PM
26	At the present time I have a care and family members that transport me but that could change and knowing another means is available is reassuring. I am 83 years old.	Dec 9, 2011 6:50 PM
27	Many people need transportation more and more	Dec 9, 2011 6:50 PM
28	We have used Dial-A-BAT from our home 1st in Brockton, now if Abington for about 3 years. It has been great as it is our only transportation to appointments.	Dec 9, 2011 6:47 PM
29	May we have the T ride for the South Shore and the BAT for Brockton.	Dec 9, 2011 6:46 PM
30	I think it as beneficial for the town	Dec 9, 2011 6:45 PM
31	Many Senior do not drive at night, so social life is restricted. Evening hours would be helpful.	Dec 9, 2011 6:41 PM
32	We definitely need some kind of transportation.	Dec 9, 2011 6:41 PM
33	It would be such a great help to us	Dec 9, 2011 6:39 PM
34	None	Dec 9, 2011 6:39 PM
35	I was wondering why Abington isn't part of The Ride from the M.B.T.A.	Dec 9, 2011 6:38 PM
36	Public transportation is long overdue!!! There is a large population that do not drive or own a car.	Dec 9, 2011 6:38 PM

37	Public transportation along Rte. 139 would be great. Abington to Rockland and also Holbrook; Randolph; Stoughton, etc.	Dec 9, 2011 6:37 PM
38	Target, Trucchi's	Dec 9, 2011 6:36 PM
39	Would be awesome	Dec 9, 2011 6:34 PM
40	I have used the transportation before and found the drivers very nice and helpful. Thank you.	Dec 9, 2011 6:34 PM
41	This is a wonderful opportunity to create new jobs and also for those of us who are having hard times and cannot drive.	Dec 9, 2011 6:33 PM
42	If you are unable to drive, transportation is vital to your health and well being, and to not feel stuck.	Dec 9, 2011 6:32 PM
43	In Abington, we don't have bus transportation to MBTA	Dec 9, 2011 6:30 PM
44	I would like to see the Ride come to Abington Sr Center and have special day trips - (fall foliage / Boston Pops + concerts)	Dec 9, 2011 6:29 PM
45	Would you have the option of monthly passes at discount rates? Would you have afternoon hours? Would you have stop at commuter rail stations? \$5 dollars seems to be to much for a round trip, there should be a discount.	Dec 9, 2011 6:28 PM
46	I use the senior van no to go to lunch on Tuesday. Also have used the van for doctor in Abington.	Dec 9, 2011 6:23 PM
47	We need this service in Abington	Dec 9, 2011 6:23 PM
48	It would be good to know that there would be a way to go further than the van or dial a Bat + that there would be a regular schedule you could plan on. Hopefully, it would accommodate a walker.	Dec 9, 2011 6:19 PM
49	I think it would great if you had no car, you could still get out.	Dec 9, 2011 6:17 PM
50	During the summer, I underwent hip surgery and was unable to drive. I discovered since I am single, the great difficulty in trying to do errands in Abington without the use of a car.	Dec 9, 2011 6:15 PM
51	I do not need transportation because I have a car and drive everyday.	Dec 9, 2011 6:10 PM
52	This could be helpful to many teenagers who may need transportation to a part-time job while their parents are working.	Oct 30, 2011 2:49 PM
53	Please bring back a bus service for the town. It worked wonderful back in the 70's Rte. 58 was the main route. Then went onto Washington St. into Whitman. RT 18	Oct 30, 2011 2:25 PM
54	Multiple Pick-ups locations needed, older people can't walk too far - To be used by many, it must be accessible and convenient - Cost of ride depends on distance, must be taken into consideration that \$2.50 to Boston is not a feasible amount, yet the same charge for a 2 miles trip is unreasonable.	Oct 24, 2011 3:21 PM

55	I think not having public transportation in Abington stops people from moving here. A lot of older people I know do not have vehicles or do not like to drive at night (including myself), and would use public transportation if it was available. Many people in the complex I live in are 'trapped' here because they do not drive and/or have no car and can't go anywhere because there is no public transportation. It doesn't seem fair that Weymouth and Quincy have buses all over the place and Abington has none. I would really like to see public transportation in Abington.	Oct 12, 2011 2:40 PM
56	There are many people, including seniors, who have no car or are unable to drive. Public transportation would be a welcomed addition to their quality of life.	Sep 30, 2011 8:11 PM